



CONTENTS	
NEWS ABOUT 15TH WCSS	1
NEWS ABOUT INTERNATIONAL SYMPOSIUM WITHIN ASIA	2
LETTERS FOR CHANGE OF PERSONNEL	18
INFORMATION OF PERSONNEL CHANGE	22
INTERNATIONAL SOIL SERVEY NEWS	23

Bukadaban Peak of Kun lun Mountain 6860 m above the Sea level

1994

07

November

# N NEWSLETTER

ESAFS

EAST AND SOUTHEAST ASIA FEDERATION OF SOIL SCIENCE SOCIETIES

**Procedure**

The workshop, to be held from 4–11 June 1995, will include invited papers, voluntary papers, a midworkshop excursion, group discussion, and a workshop resolution.

A poster session will be arranged for relevant topics. Awards will be presented to the authors of outstanding displays.

The workshop will cover the following topics:

1. Concepts on the conservation of soil resources.
2. Strategies in gaining farmers' awareness and willingness to cooperate.
3. Implementation processes for soil conservation extension.
4. Adoption of conservation technologies.

**Programme****Saturday, 3 June 1995**

Arrival

**Sunday, 4 June 1995**

Registration

Opening of exhibits and poster display

**Monday, 5 June 1995**

Welcome and opening addresses

Presentation of invited and voluntary papers

Reception

**Tuesday, 6 June 1995**

Presentation of invited and voluntary papers

**Wednesday, 7 June 1995**

Mid-workshop excursion

**Thursday, 8 June 1995**

Panel discussion

Working group discussion

Farewell dinner

**Friday, 9 June to Sunday, 11 June 1995**

Report, resolution, and closing remarks;  
post-workshop excursion to visit project  
sites in Chiangmai and Chiangrai.

**Call for papers**

The deadline for abstracts (which should be no longer than 200 words) from prospective authors shall be 31 October 1994. Upon notification, the full texts (to be prepared according to instructions) shall be submitted to the Organizing Committee by no later than 28 February 1995.

**Registration**

The registration fee for attending the workshop will be US \$ 300. The fee covers transfer

from and to the airport, workshop package, lunches and light refreshments, mid-workshop excursion, all social functions, and the workshop proceedings (to be published later). Accompanying persons who will attend social functions and the mid-workshop excursion will be charged US \$ 75 each. The cost of the post-workshop excursion from 9–11 June 1995 will be US \$ 160 (shared double) and US \$ 200 (single).

#### **Accommodation**

Accommodation will be reserved in a hotel in Chiangmai. The rate for a single / double room will be approximately US \$ 50–60 / day.

#### **Venue**

The workshop will be held at a hotel in the city of Chiangmai in northern Thailand.

#### **Language**

The official language of the workshop will be English.

#### **Financial support**

Some funding will be provided for participants from developing countries. Preference will be given to applicants who will present papers. Those interested may apply when sending abstracts. Participants are also advised to contact other donors or agencies who may be interested in providing funds for their attendance.

#### **Programme for accompanying persons**

Sightseeing tours to several places of interest in and around Chiangmai will be organized for accompanying persons on 4 June (afternoon), 6 June and 8 June 1995.

#### **Field trips**

A mid-workshop field trip on 7 June 1995 will take participants to two soil conservation projects which demonstrate how farmers' acceptance of soil conservation measures can be achieved.

A post-workshop excursion from 9–11 June 1995 will travel through the spectacular scenery of Chiangmai and Chiangrai provinces. Participants will visit a number of land development and soil conservation projects which are being implemented by government agencies and by NGOs. Some are located on erosion-prone mountainous areas where several ethnic groups dwell. Stops at certain sightseeing spots will be included.

#### **For more information please contact:**

Mr. Sompong Theerawong

Organizing Committee Chairman

Department of Land Development

Paholyothin Road, Bangkok 10900

Thailand

Tel. 66–2–5611954

Fax. 66–2–5611230 / 5613029 / 5620313

# **International Workshop on Conservation Farming for Sloping**

## **Uplands in Southeast Asia:Challenges,**

## **Opportunities and Prospects**

**Manila, Philippines 13–19 November 1994**

Organized by:

Philippines Council for Agriculture, Forestry and  
Natural Resources Research and Development (PCARRD)  
International Board for Soil Research and Management  
(IBSRAM)

Supported by:

Swiss Development Cooperation (SDC)  
Dr.Amado R.Maglinao  
Organizing Committee Chairman  
PCARRD, Los Banos, Laguna 44030, Philippines  
Telephone:50014 to 20,50024  
Telex:40860 PARRS PM  
Fax:(63)094 50016  
Cable:AGRESPHIL

### **Theme**

During the last two decades , the lowlands and fertile uplands of most countries in Southeast Asia have become densely occupied, virtually closing the land frontier on favorable soils, In addition, increasing demands on the sloping uplands in the region are being made to support the needs of a growing population.

Although the need for improved agricultural production systems is clearly recognized, much stronger emphasis must be given to alternative, sustainable development on these fragile uplands. To address this concern, a more critical evaluation of the interrelated factors affecting the ultimate adoption and utilization of technologies for the management of sloping uplands for agriculture should be given priority attention.

### **Objectives**

The workshop will provide a forum for exchange of information and interaction among policymakers, researchers, extension specialists, and farmers concerned with conservation farming. More specifically, the workshopp aims to: 1) review and evaluate conservation farming technologies for Southeast Asia; 2) determine and assess the socioeconomic considerations and constraints for conservation farming; 3) review related policies and recom-

mend strategies for accelerated adoption of conservation-farming technologies; and 4) formulate action plans and guidelines for future directions

### **Program Structure**

The workshop will consist of presentations and discussion of invited papers (plenary papers), a poster session, workshop group meetings, and a field trip. A one-or two-day post workshop tour may be arranged depending on the response from the participants.

**Plenary Session**—A number of invited papers will be presented in plenary during the first three days. The papers will encompass the following topics:

1. On-site and off-site effects of conservation farming.
2. Evaluation of improved technologies for conservation farming.
3. Economic considerations in conservation farming.
4. Farming systems' evaluation of conservation farming.
5. Policy issues and support for conservation farming.
6. Technology transfer needs for conservation farming.

**Poster Session**—A poster session for screened papers will be included. Posters submitted should also cover the six topics identified. Abstracts should be submitted by 31 July 1994; and there will be the basis for selection for the poster session by the screening committee

**Working Group Meetings**—Working groups will be formed to discuss the different aspects of conservation farming vis a vis the objectives of the workshop. A report back session will be held on the final day.

**Field Trip**—A field trip to the IBSRAM project site and other related projects will be organized to demonstrate-farming practices and complementary research activities.

### **Language**

The Workshop will be conducted in English.

### **Timetable**

Prospective authors for the plenary and poster papers should submit abstracts of not more than 250 words to reach the Organizing Committee by 30 March 1994.

Notices of acceptance will be issued by 31 May 1994, together with detailed instructions for the preparation of the papers. Final manuscripts for the plenary papers will be required by 7 August 1994.

A pre-printed volume of papers will be distributed to the participants during conference registration.

### **Venue**

The workshop will be held at the Holiday Inn in Manila.

### **Registration Fee**

A registration fee of US \$ 300 will be charged. The fee will cover the workshop kit, field trip, lunches, and light refreshments.

### **Financial Support**

Some grants will be available to participants from countries in the Asian region. These will

cover return air tickets between their nearest international airport and the Philippines and / or subsistence during the conference. In allocating grants, preference will be given to applicants who are offering papers.

Participants are also encouraged to inquire from other donors or projects who may be interested to sponsor their attendance.

**Pre-registration**

Prospective participants should complete the attached form and send it to the Organizing Committee Chairman to be received by 1 March 1994.

**Post Workshop Field Trip**

Subject to demand, it may be possible to arrange a one-or two-day field trip to other areas of interest (Pinatubo-affected area and other sites in Manila).

# International Symposium on Soil—Source

## and Sink of Greenhouse Gases

Institute of Soil Science, Nanjing,

China 14–30 Sept. 1995

Sponsored by Chinese Academy of Sciences

### Supporters:

Chinese Academy of Sciences, China National Natural Science Foundation, China International Center for Technology Exchange, National Institute of Agro-Environmental Sciences, Japan, and others.

### Background:

Investigations conducted during the past two decades have shown that atmospheric concentrations of greenhouse gases, such as CO<sub>2</sub>, CO, CH<sub>4</sub> and N<sub>2</sub>O, are continuously increasing as a consequence of intervention by human activities. The impact of greenhouse gases on global climate change have drawn much attention of scientists from different disciplines. It is evident that the ecosystems play a significant role in the production or consumption of greenhouse gases. How soil modifies the concentrations of these gases in the atmosphere is not yet clear. The purpose of this Symposium is to evaluate the role of soil as a source and / of sink of the greenhouse gases, with the aim to elucidate the mechanisms and magnitude of gas generation and emission from soils, as well as gas sorption and utilization by soils. Of critical importance will be development of strategies for reduction of greenhouse gas emission from soils.

The influence of agricultural production on greenhouse gas generation and emission has not been studied extensively. China offers an ideal setting for first-hand observations and understanding of several major processes in greenhouse gas production. It accounts for one-third of world's rice production and one-fifth of world's consumption of nitrogen fertilizers. In addition, organic manures have traditionally been applied extensively for improvement of soil fertility and crop production. Pre-symposium and postsymposium tours will enable participants to investigate the magnitude of potential problems in greenhouse gas emission and explore strategies for reduction of gas emission under various environmental conditions.

### Theme:

1. Evidence of soil as source and sink of greenhouse gases;
2. Mechanisms of greenhouse gas generation and emission from soil;

3. Estimation of greenhouse gas emission from soils on a regional scale;
4. Strategies for managing emission of greenhouse gases from soils.

**Organizer:**

Laboratory of Material Cycling in Pedosphere, Institute of Soil Science, Chinese Academy of Sciences, Nanjing.

**Organizing Committee:**

- Prof. Q.G.Zhao (Chair, China)
- Prof.H.H.Cheng (Co-chair, U.S.A.)
- Dr.K.Minami (Co-chair, Japan)
- Prof. D.S.Powelson (Co-chair, U.K.)
- Prof.G.X.Xing (Secretary General, China)
- Prof. Z.C.Cai (Deputy Secretary General, China)
- Prof.Z.H.Cao(China)
- Prof.C.V.Cole (U.S.A)
- Prof.J.Freney (Australia)
- Prof.Y.D.Hu (China)
- Prof.T.B.Guo (China)
- Dr.K.Kimble (U.S.A.)
- Prof. M.X.Wang (China)
- Prof.Z.L.Zhu (China)
- Prof. Y.R.Zhao (China)

**Route for investigation tours**

1. Pre-symposium tour (14-17 September, 1995)  
Shanghai-Hangzhou-Suzhou-Nanjing.
2. Post-symposium tour (22-30 September, 1995) Nanjing-Xi'an (ancient capital, terra-cotta warriors), -Chengdu (Jiuzhaigou, Leshan giant stone buddha), -Chongqing (by boat, The Three Gorges)-Wuhan.

**Fees:**

1. Accommodation in starred hotels are offered to participants. The prices shown are per room, per night, including meals. Not included in the room price are IDD phone calls, laundry, drinks from mini-bar.

2. Accommodation in Nanjing

Hotel	Double (2 persons)	Single occupancy
"A"	US \$ 170	US \$ 125
"B"	US \$ 170	US \$ 75

Fee for sightseeing in Nanjing: US \$ 25 / person

3. Accommodation during tour

Hotel:	Double	Single
--------	--------	--------



(2 persons) occupancy  
US \$ 170 US \$ 120

4. Intercity transport fare (subject to fluctuation) pre-symposium tour: US \$ 50 / person  
post-symposium tour: US \$ 500 / person including the fee for a 2-3 night stay on a deluxe tourist boat from Chongqing to Wuhan.

**General Information**

**Venue:**

Institute of Soil Science, Chinese Academy of Sciences, Nanjing, China P. R.

**Schedule:**

Sept. 14-30, 1995

Sept. 14-17 (pre-symposium tour)

Sept. 18-21 (Symposium)

Sept. 22-30 (post symposium tour)

**Working language:** English

**Climate:**

In mid and late September, the highest average temperature by day is 28°C in Nanjing and ranges between 20°C -25°C in the investigation areas.

**Mailing Address**

For registration, abstracts and inquiries, Please contact with:

Prof. G. X. Xing

Secretary-General of International Symposium on Soil—Source and Sink of Greenhouse Gases,

LMCP, Institute of Soil Science,

Chinese Academy of Sciences

P.O.Box 821, Nanjing, P.R.China

Fax:86-25-335-3590

# **International Symposium on Alternatives to Slash-and-Burn**

## **Agriculture and Post-Field Survey**

**Kunming, China P.R. 7-16 March 1995**

Organized by:

International Centre for Research in Agroforestry (ICRAF)

Institute of Soil Science, Academia Sinica (ISSAS)

### **Background**

Slash-and-Burn (S&B) agriculture is a world-wide problem which has destroyed valuable tropical forests and caused soil and environmental degradation. Besides, about 25% of the total global warming effect is attributable to the cleaning of tropical rain forests. It is an urgent task for us to find sustainable alternatives for farmers who practice unsustainable S&B agriculture.

The S&B has been existed in China, in recent decades, mostly in southern part where minority nationalities live, especially in Yunnan, Hainan, Guizhou, Sichuan, and Guangxi provinces. As a result, soil fertility is declined and farmers are suffering from the shortage of firewood, timber, and fodder.

To deal with S&B problems, Chinese scientists and government officers have done a lot to stop or improve this practice and S&B area has been decreased in the recent years. Scientists have developed many alternative ways of using the land, of which some are very successful while some are less adoptable. Besides, there is still certain region remaining this practice. The slash-and burn for afforestation of certain trees remains a regulation in a wide area of the country.

### **Objectives**

Since ICRAF launched the challenge to slash-and-burn, the old topic has aroused great attention in China. Discussed with Chinese agroforestry network members, we will organize a symposium on slash-and-burn agriculture and conduct a post-field survey in March 1995 in Kunming and Xishuangbanna respectively. The main topics include:

- 1) Indigenous knowledge on slash-and-burn;
- 2) Historical aspects and succession of S&B ;
- 3) Current practice utilized by S&B farmers;
- 4) Investigation, evaluation, and analysis to the selected Alternatives to S&B (ASB);
- 5) Improved technological interventions currently being promoted by scientists.

### **Program structure**

The program will consist of presentation and discussion, poster presentations, exhibitions of articles and publications, and post-field survey from Kunming to Xishuangbanna.

**Expected output**

The expected output will include:

- 1) A proceedings in Chinese with English summary and an abstract copy in both English and Chinese will be published;
- 2) A special issue of *Agroforestry Today* (Chin.) and *Agroforestry Communication* (Eng.) will be published;
- 3) An action plan for further national and international research and development will be proposed, and a national interinstitutionary ASB network will be developed.

**Language**

The working language will be English.

**Timetable**

Registration: 6 March 1995

Plenary presentation and discussion: 7–9 March 1995

Post-field survey: 10–16 March 1995

**Deadlines**

Submission of registration form: 10 November 1994

Submission of abstract (no more than 400 words): 10 December 1994

Submission of full paper (no longer than 15 pages doubled-spaced including tables, figures, and references): 10 January 1995

Notice of acceptance will be issued by 10 February 1995.

**Costs**

Registration: USD120, if participating only in symposium; or USD460, if participating in both symposium and post-field survey (including bus-transportation from Kunming to Xishuanbanna, and air ticket from Xishuanbanna to Kunming).

Accommodation (hotels and meals): USD 100 / day

All payments are required in cash of US Dollars.

**Climate**

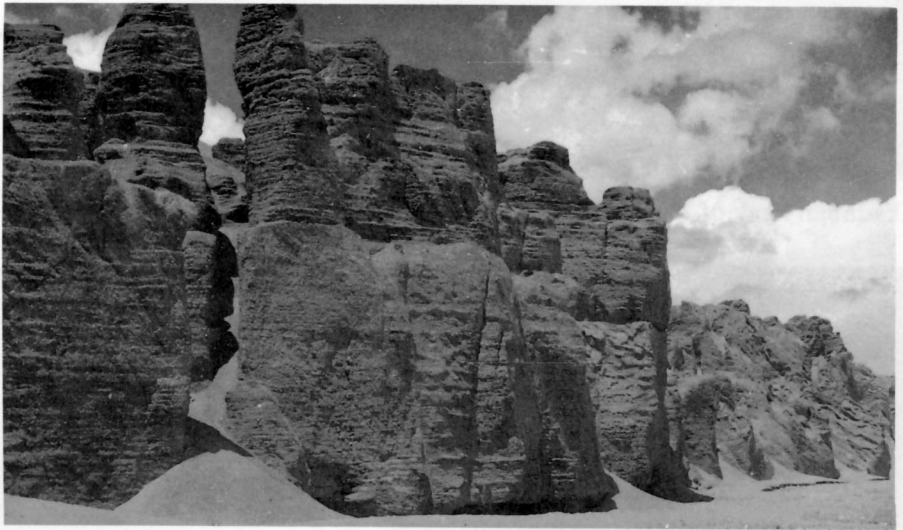
As usual, Kunming is warm and draughty in early spring, with mean monthly temperature of 13°C.

**Insurance**

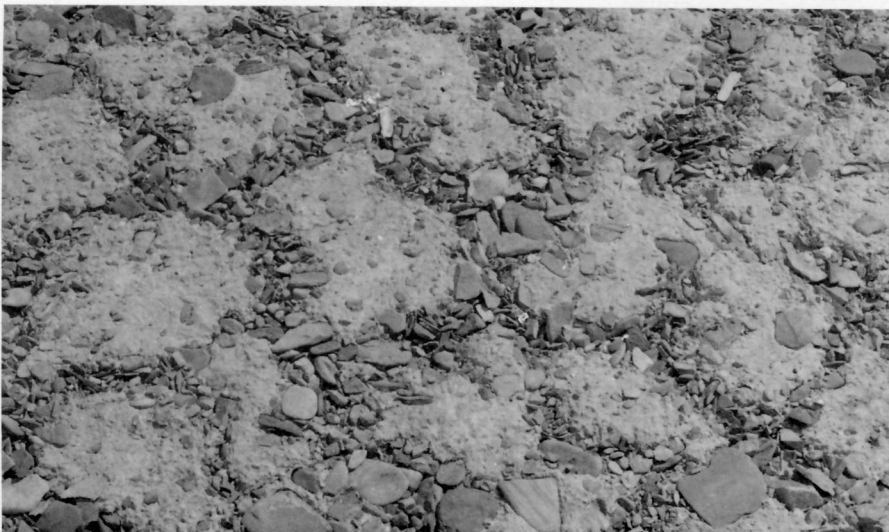
The organizers will not be held responsible in case of accident, illness, theft or death while travelling to and from, or staying in China to attend the symposium and post-field survey.



Tundra Soil of plateau



Wind-erosion geomorphy of Ku lun Mountain



Freeze—thaw geomorphy of Qing—Zang Plateau—  
Stone circles

## Letters for Change of Personnel

### **The Chinese Society of Soil And Fertilizer Sciences (Tai Wan)**

Prof. Gong Zitong  
Secretary General  
ESAFS—Office (1993—1994)  
C / O Institute of Soil Science,  
Academia Sinica  
P.O.Box 821,  
Nanjing 210008  
P.R. China

March 4, 1994

Dear Prof. Gong:

This is to inform you that the election to the Council of the Chinese Society of Soil and Fertilizer Sciences was held on December 12, 1993. Prof. Y.P. wang and Dr. Y. Shen have been elected for President and Secretary General of the society for term of 1994—1995, respectively. Hereafter, all correspondence may kindly be send to following address.

Dr. Y. Shen  
Secretary General  
CSSFS—Office(1994—1995)  
C / O Department of Soil Science  
National Chung—Hsing University  
Taichung, 40227  
Taiwan.

Yours sincerely,

Yuan Shen  
Secretary General, CSSFS

## Soil Society Of Indonesia

### CENTER FOR SOIL AND AGROCLIMATE RESEARCH

Jalan Ir. H. Juanda 98 Bogor 16113—Indonesia

Phone: (0251) 323012

Cable: LITTANAKBOGOR

Fax: 0251—311256

Dear,

Prof. Zhao Qiguo

President of East and Southeast Asia Federation of Soil Science Societies

P.O.Box No. 821 Nanjing

People's Republic of China

Dear Prof. Qiguo,

For your information, we have received ESAFS Newsletters No. 02, 03, 05—1992, sometime in January 1992 and just last week No. 06 December 1993. However we did not get no. 01 and 04. We would be very appreciated if you could send them.

In following we would like to present these informations:

The present Central Committee of The Soil Science Society of Indonesia (SSSI) for the working period 1990—1993 / 1994 which was elected during National Soil Congress December 1990 consisting of the following officers:

President: Dr. Lutfi I Nasution

Immediate Past President: Dr. Isa Darmawijaya

Vice President I : Dr. Ir Suryatna Effendi / Dr. A.Syariffudin K

Vice President II : Mr. Djamin T. / Dr. Marjudi S.

Vice President III: Mr. Dwijatmo

General Secretary: Dr. Sudarsono

Secretary I : Dr. Astiana

Secretary II : Ms. Nur Sulistiati / Rizatus Shofiyati

Executive Secretary: Dr. Subagjo H.

Treasurer: Mr. Abdoel Rochim

Division I (Soil Physics and Soil Mechanics): Dr. Suwardjo

Division II (Soil fertility and Biology): Dr. B.Radjagukguk

Division III (Soil Mineralogy, Genesis and Classification): Dr. Didiek H. Goenadi

Division IV (Survey and Land Evaluation): Dr. Sarwono Hardjowigeno

Division V (Soil Technology and Management): Dr. Marjudi S.

All correspondence which regards to the SSSI may be forwarded to the address given below:

**Executive Secretary**  
**C / O Center for Soil and Agroclimate Research**  
**Ji. Ir. H. Juanda 98 Bogor 16123-Indonesia**  
**Phone: (62-251) 323012**  
**Fax: (62-251)311256**

The coming 6<sup>th</sup> National Soil Science Congress will be planned in Jakarta around April 1994. At the same time the new Central Committee will be elected.

We are looking forward to have another news from our ESAFS.

Thank you very much for your kind attention.

With all best regards.

Sincerely your.

Dr. SubagioH

SSSI Executive Secretary

A handwritten signature in black ink, appearing to be 'SubagioH', written over a horizontal line.

**Letter Prof. Gong Zitong (The Seceretary  
General, ESAFS) Wrote To Dr. Wan Sulaimen  
Wan Harun (Vice President, ESAFS)**

**ISSAS**

**East Beijing Road 71#    Tel: 86-25-3367354**

**P. O. Box 821    Fax: 86-25-3353590**

**Nanjing, China    Cable: 1099**

**Oct. 8, 1994**

**Dr. Wan Sulaimen Wan Harun**

**Vice President ESAFS**

**President Malaysia Society of Soil Science**

**P. O. Box 12644**

**50784 Kuala Lumpur**

**Malaysia**

Dear Dr. Wan Harun,

It's pleasant to know that under your leadership Malaysia Society of Soil Science will hold the International Conference on Soil Resource and Sustainable Agriculture for East and Southeast Asia, co-organized by Malaysia Society and EAAFS. We will do our best for the this conference, and hope it a success.

As planned, we will still preside ESAFS activity in the time of above conference. After ESAFS Newsletter No. 5 and No. 6, Newsletter No.7 will be published in this autumn. We hope you could provide information about activities of your socity (text as well as photos) for the coming newsletter.

Hope you could visit China when your convenience.

Looking forward to your reply.

Sincerely yours,

Prof. Gong Zitong

Seceretary General, ESAFS



## Information of Personnel Change

### **Soil Science Society of Bangladesh**

From Prof. T.H.Kahn, Past Secretary—General of the above Society, we received the following information:

On May 19th, 1993, elections to the Council of the Soil Science Society of Bangladesh were held.

Mr. S.M. Saheed, Director. SRDI, Dhaka, was elected President and

Dr. S.M. Imamul Huq, Professor, Department of Soil Science, University of Dhaka, Dhaka-1000,

Bangladesh, was elected Secretary—General.

All correspondence for the Soil Science Society of Bangladesh should kindly be addressed to Prof. Huq.

### **Soil Science Society of Bosnia**

#### **And Herzegovina**

A letter reached us from the Soil Science Society of Bosnia and Herzegovina. with the names of the members of the newly—elected board:

President: Prof. Dr. Bahrija Saciragic. Faculty of Agriculture Sarajevo

Hon. Presidents: Dr Vojna Jaksic Prof. Dr. Husnija Resulovic

Vice—President: Prof. Dr. Esma Velagic—Habul. Faculty of Agriculture

## International Soil Survey News

### **International Cryosol Survey Will Be Conducted In Tibet Plateau In August, 1995**

In order to ensure that the survey will be hold smoothly and successfully, mandated by ISSS Cryosol Working Group and International Permafrost Association Cryosol Working Group, the Institute of Soil science, Academia Sinica had set up a special preparatory committee and sent three members to Tibet for the preparatory work. Now, further related work is being done enthusiastically and fruitfully. According to the plan, the International Cryosol Survey will carry out from the last ten days of August to the first ten days of September in 1995. After the survey, the participants will go to Najing from ChongQing by ship along Yangzi river via the Three Gorges.

## News About 15th WCSS

### **Active Participation of ESAFS Members In 15th ICSS**

Member societies of ESAFS actively participated in the 15th International Congress of Soil Science, 10–16th, July, Acapulco, Mexico.

Roughly statistics showed all member societies sent delegates to Mexico, among which, there were more than 30 participants from China (Mainland and Taiwan), India, Japan and Thailand societies respectively. Other representatives came from Bangladesh, Indonesia, Korea, Malaysia, Pakistan, Sri Lanka, the Philippines and Vietnam societies. Total number was about 180, accounting for 14 percent of the congress.

During the congress, representatives of ESAFS member societies took several meetings. Current President Zhao Qiguo and Secretary General Gong Zitong of ESAFS met Malaysia representatives and had a discussion about the International Conference dated the next year in Malaysia. They also discussed about symposium on paddy soil fertility with Thailand representatives, and had a talk with Japanese participants about cooperative research on saline soils in East Asia. Member societies had a wide contact during the Congress.

News About International Symposium Within Asia

**International Conference On Soil Resource And Sustainable  
Agriculture For East And South-East Asia (Soilsafe)**

**Kualalumpur, 12–15 September 1995**

Organized by

Malaysian society of soil science

In collaboration with

East and southeast asia federation of soil science societies

The Malaysian Society of Soil Science cordially invites you to participate in the International Conference On Soil Resource and Sustainable Agriculture in East and South-East Asia to be held at Kuala Lumpur Malaysia on 12–15th September, 1995.

**Objectives**

Land and soil degradation is one of the main limitations to agriculture production in this region, It is essential that proper management of soil resource be practised to ensure high sustainable agricultural production. With the increase in population, there is a demand to increase agricultural productivity. To achieve this, productivity from agricultural areas must be increased or new areas have to be made available. In doing so there is a need to conserve and optimise our soil resource to ensure productivity is sustained with minimal impact to the environment.

This conference is organized to bring together scientists and professionals to discuss the latest findings on various aspects of management soil resource for sustainable agriculture.

**Scientific Programme**

The programme will consist of keynote addresses, plenary lectures and oral / poster presentations on the following:

Agroclimatic considerations

Amelioration of acid soils

Conservation of sloping land

Environmental consideration

Life cycle analysis

Low input technology

Mechanisation in sustainable agriculture

Nutrient recycling and balance

Soil biota

Soil-crop suitability  
Sustaining soil physico-chemical properties  
Use of organic matter amendments  
Use of fertilizers  
Water management practices

**Call For Papers**

Contributions for papers and posters presentation are welcomed. Authors are requested to submit the titles and extended abstracts of their papers. The extended abstract should be 300 to 400 words long. It should contain brief accounts of the research background and objectives, methods, major results and conclusions. Deadlines for submissions are as follows:

Abstract:1st November 1994

Full paper:1st June 1995

**Registration Fees**

MSSS Members RM475.00(USD 190.00)

Non Members RM600.00(USD 240.00)

The registration will entitle a participant to admission to all scientific programmes, daily lunch, refreshments and conference materials.

**Language**

The conference will be conducted in English.

**Conference Tour**

A technical tour will be arranged for participants.

**All correspondence should be addressed to:**

The Secretary

SoilSAFE

Department of Soil Science

Universiti Pertanian Malaysia

43400 UPM Serdang, Selangor D.E.

ATTN:DR.A.R.ANUAR

Tel.Phone:03-9486101 Ext:2640

Telex:UNIPER MA 37454

Telefax:03-9483745

**International Congress on Soils of Tropical  
Forest Ecosystems Balikpapan (Kalimantan) Indonesia**

**October 30.—November 03, 1995**

**Scientific Program**

The program will include "State-of-the-Art" lectures, plenary sessions and poster sessions. Plenary sessions are to be structured with both invited and voluntary papers. Detailed instructions for the presentation will be communicated along with the acceptance. To achieve the objectives of the congress the scientific program will focus on the following topics:

- **Soils in tropical forest ecosystems**

Characteristics, classification and management problems

- **Forest soil degradation**

Assessment and impact, nature and extent of degradation, data base, socio-economic consequences

- **Hydrology of tropical forests**

Effects of conversion and management; Erosion—processes and modeling

- **Soil and water conservation**

Traditional and modern techniques, experiences, case studies of watershed management

- **Nutrient cycling**

Measurement and modeling of nutrient cycling in natural forest ecosystems and plantations; input / output balance of bioelements

- **Bioelements / Trace Elements**

Deficiencies and toxicities in tropical forest soils and trees

- **Fertilization**

Fertilization management and techniques of tropical forest soils, growth and yield, environmental impact, costs

- **Soils of agroforestry ecosystems**

Soil productivity and conservation aspects of agroforestry ecosystems in the tropics

- **Roots and mycorrhizas**

Classification, function, biomass

**Lectures / Publication**

During the inauguration and closing ceremonies as well as on specific daily schedules lectures from invited speakers will be held covering the "State-of-the-Art" on the different topics of the congress. These lectures will be presented by leading scientists of international recognition.

All accepted papers will be published in the congress proceedings (ISBN)

**General informations**

**Date and venue:**

October 30. (Monday)

⇒Nov.03.(Friday) 1995

Balikpapan (East Kalimantan) / Indonesia

**Organizing committee:**

Indonesian—German Forestry Project Faculty of Forestry / Mulawarman University

Dr.Andreas Schulte—Dr.Daddy Ruhiyat

P.O.Box 1227

Samarinda 75123

East Kalimantan / Indonesia

Tel:0062—541—35089

Fax:0062—541—35379

**Official language:**

The official language of the congress will be English.

**Introducing Kalimantan:**

Kalimantan has always had a special place in the imagination of the rest of the world. Kalimantan, which means "River of Diamonds" in Indonesian, is the name Indonesia gave to her two-thirds of the huge island of Borneo. The region is abundant in natural resources, many of which are still untapped, and is covered by one of the world largest stretches of tropical rainforest.

Thanks to the enormous stockpiles of oil, gas, timber and coal found here, East Kalimantan (Kaltim) is Indonesia's richest province. In the coastal cities of Samarinda, the provincial capital, and Balikpapan, a 350,000 habitants town built on oil, the visitor can find excellent accomodations, Indonesian, Chinese and Western-style food and well developed communications.

Balikpapan International Airport, the second largest of Indonesia, is well connected by air with major cities around the world. GARUDA, the national carrier, and SEMPATI, have at least six flights per day from Jakarta to Balikpapan.

Balikpapan lies about 200 km south of the equator with a hot (26—30°C ) and humid climate.

**Tours:**

Scientific post-congress tours will be conducted as well as a touristical program in Kalimantan, Bali and Java.

**Important dates:**

1. Announcement / Mailing list:

July to September 1994

2. Announcement

October '94 to March 1995

### **3. Registration and Payment—Full Papers April to June 1995**

#### **Support for Participation**

For providing financial support to delegates from the developing countries, we are trying to contact potential donors and are hopeful to get some funds through which we may be able to partially support their participation. Interested participants may contact the Organizing Committee. We will be happy to write letters of support, on request, to the organizations from whom the participants may hope to get financial assistance.



# **International Workshop on Soil Conservation Extension:**

## **Concepts, Strategies, Implementation and Adoption**

**Chiangmai, Thailand 4–11 June 1995**

Organized by:

Soil and Water Conservation Society of Thailand (SWCST)

Department of Land Development (DLD) The International Board for Soil Research and Management (IBSRAM)

### **Background**

In the past 30 years there have been many agricultural projects involving land development and soil conservation all over the world. Some projects have met with reasonable success, but a number—mostly in developing countries have failed pitifully. Analyses of the causes of failure have invariably pointed to the non-acceptance of various technologies introduced to the farmers. There are many reasons behind this but the key element is certainly how properly the extension of soil and water conservation is carried out.

Thailand has gained experience in soil conservation implementation by thorough execution of soil conservation practices on farm land by using government funding; allowing farmers to take full responsibility for their own measures and subsidizing some of the costs incurred; using engineering structures; and employing agronomic methods. Such experiences in Thailand where successes and failures proliferate, may be interesting as long-term land management lessons.

### **Theme**

Such diversity of conservation methods has led to numerous levels of farmer's acceptance, and thus the projects' success. It has been indicated frequently that extension in both qualitative and quantitative terms is highly significant in the achievement of a project. The Soil and Water Conservation Society of Thailand deems it essential and timely for a discussion on soil conservation extension. Interaction among participants belonging to different professional groups, as well as extension examples from various countries, will help to prepare appropriate guidelines for soil conservation extension steps and the planning of agricultural development projects involving soil and water conservation in the future.

### **Objectives**

The workshop's objectives are:

- to review and evaluate the past and present modes of extension being employed in soil conservation projects;
- to relate these modes with the degrees of success the projects have achieved in the past; and
- to recommend guidelines for effective soil conservation extension for use in future work.